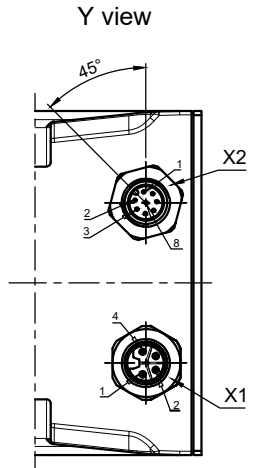
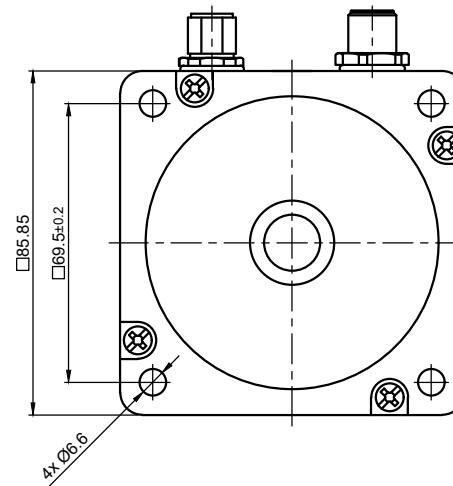


NMM1-SSI



ENCODER SPECIFICATION

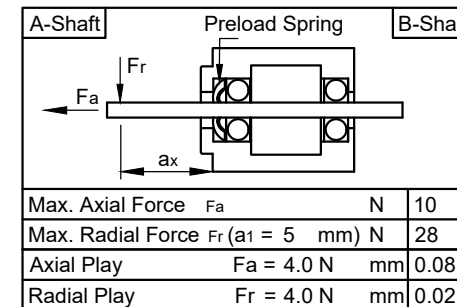
Operating Voltage	V DC	4.75...15
Singleturn Enc. Resolution	bit	17
Multiturn Enc. Resolution	bit	16
Interface	SSI	

MOTOR SPECIFICATION

Nominal Operating Voltage	V DC	48
Max. Operating Voltage	V DC	60
Current per Winding	A	9.5
Resistance per Phase (25°C)	±15% Ω	0.26
Inductance per Phase (1 kHz)	±20% mH	2.4
Holding Torque	Nm	9.3
Step Angle	±5% °	1.8
Rotor Inertia	kg m ²	300 x 10 ⁻⁶

GENERAL MOTOR SPECIFICATION

Ambient Temperature	°C	-10 ... 50
Max. Ambient Humidity (non condensing)	%	85
Protection Class (except shaft outlet)	IP65	
Protection Class (shaft outlet)	IP54	



X1 MOTOR	
M12 / 4-Pole / L-Coding / male	
Pin No.	Function
1	A\
2	A
3	B
4	B\

cable shield on housing

X2 ENCODER	
M12 / 8-Pole / A-Coding / male	
Pin No.	Function
1	Clock+
2	Clock-
3	Data OUT+
4	Data OUT-
5	GND
6	n.c.
7	n.c.
8	+UB

cable shield on housing

In addition to this datasheet the documentation of all components mentioned with part number is applicable and has to be considered

ISO 8015	ISO 1302	ISO 2768 cK	ISO 13715	Weight: ±10% 3.8 kg
			Date	Name
			Drawn	22.04.2024
			Reviewed	07.05.2024
			Released	07.05.2024
REV	Rev. Text	Name		

ASA8618L9504-W1

20002414

State: Released

Rev: 00

CONFIDENTIAL